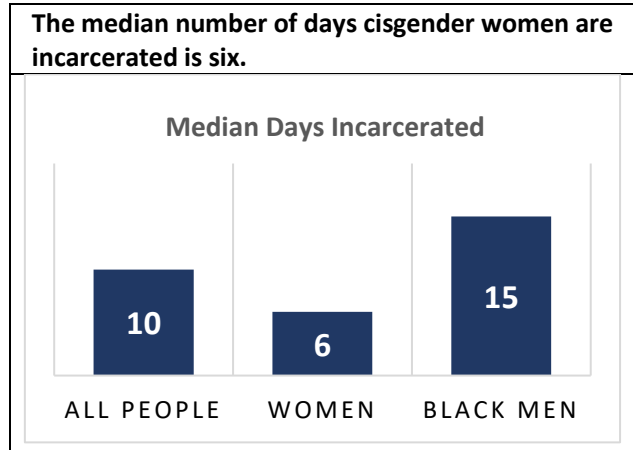
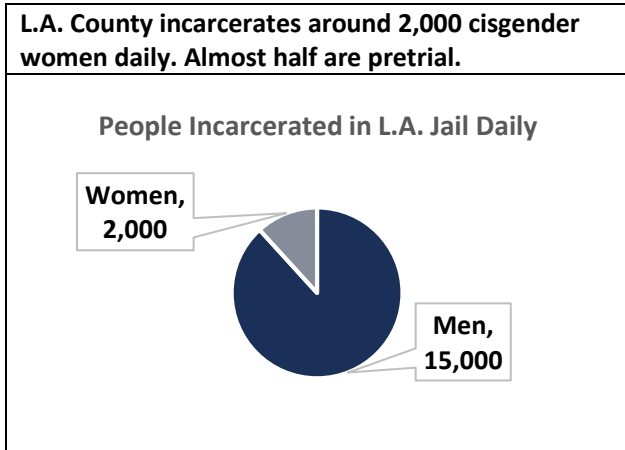


## WHAT DO WE KNOW ABOUT CISGENDER WOMEN\* IN LOS ANGELES COUNTY JAIL?

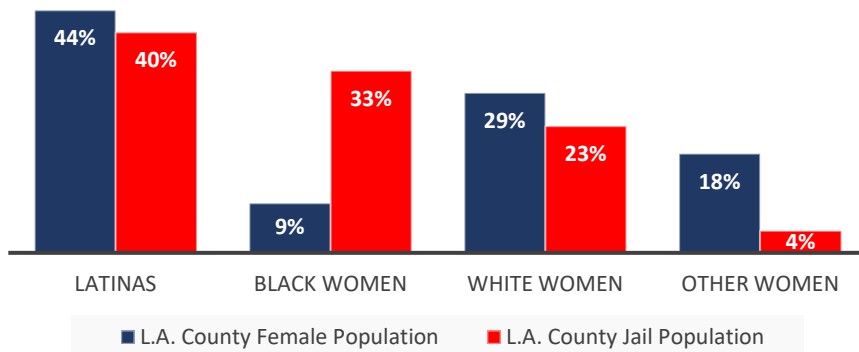


**Around half of women are part of LASD’s “mental health population” – with a daily average in February 2019 of around 978 women.** As of 2015, the rate of mental illness is significantly higher in the female population (27%) than in male population (19%), and this disparity continues to grow.

### There are significant racial disparities.

Black and Latinx women are around 54% of the women in L.A. County but over 70% of those in the jail. Black women are hardest hit; they are only 9% of women in L.A. County and 33% of jail bookings of women.

L.A. County Population & Jail Bookings of Women by Race (2010-2016)



### SPOTLIGHT ON CISGENDER WOMEN OVER 50 YEARS OLD

**Average age of woman incarcerated in L.A. County:** 33 years old

The County has been incarcerating on average nearly 3,000 women over the age of 50 each year.

**RACIAL DISPARITY:** Black women were 43% of women over 50 who were booked.

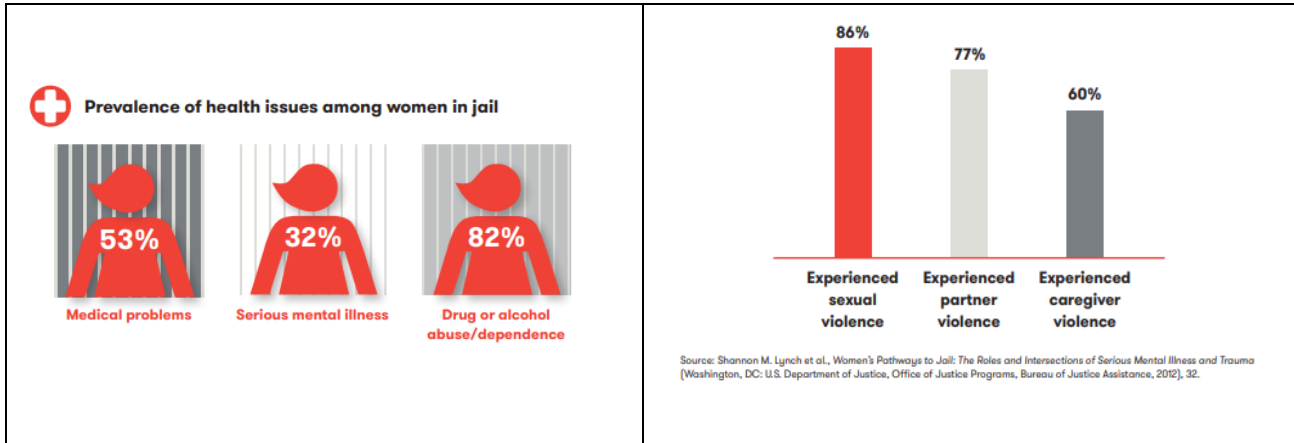
**All women incarcerated in L.A. County:** 9% houseless  
**Incarcerated women over 50 years old:** 14% houseless

Most women over 50 years old were incarcerated for the same types of low-level offenses as other women as well as for “compliance” issues like failure to appear or supervision violations.

\* “Women” and “female” are, at times, used interchangeably with cisgender women in this handout. Transgender women are addressed in another handout.

## WHAT DO WE KNOW ABOUT INCARCERATED WOMEN NATIONALLY?

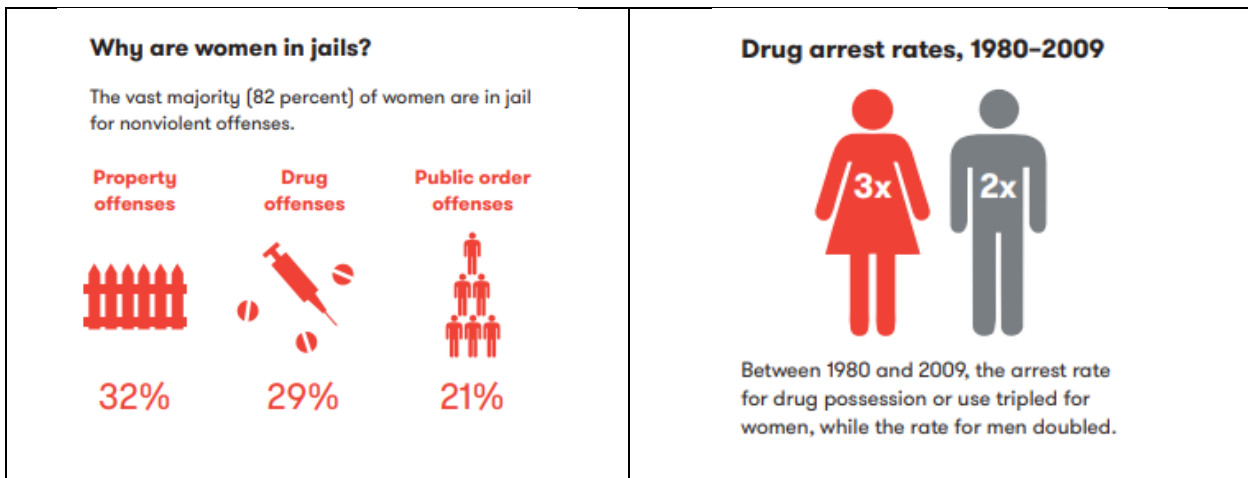
The % of **serious mental illness** affecting incarcerated women is more than 2x that of jailed men and 6x that of women generally. Also, **most incarcerated women have experienced violence** in their lifetime.



Nearly 80% of women in jails are mothers and primary caretakers for their young children. Many are in a financially precarious situation.



The majority are arrested for low-level charges related to substance use, poverty and survival.



## WHAT ARE SOME DRIVERS OF INCARCERATION OF CISGENDER WOMEN IN L.A.?

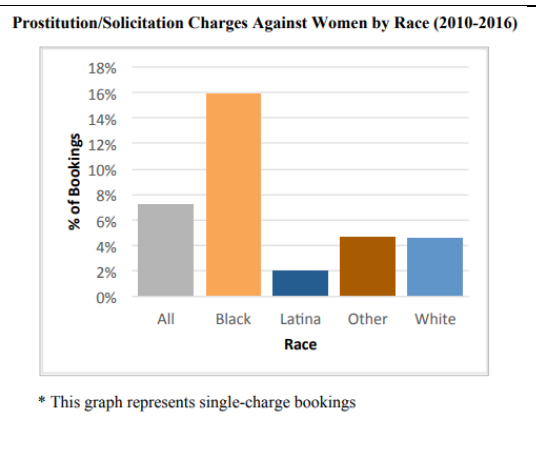
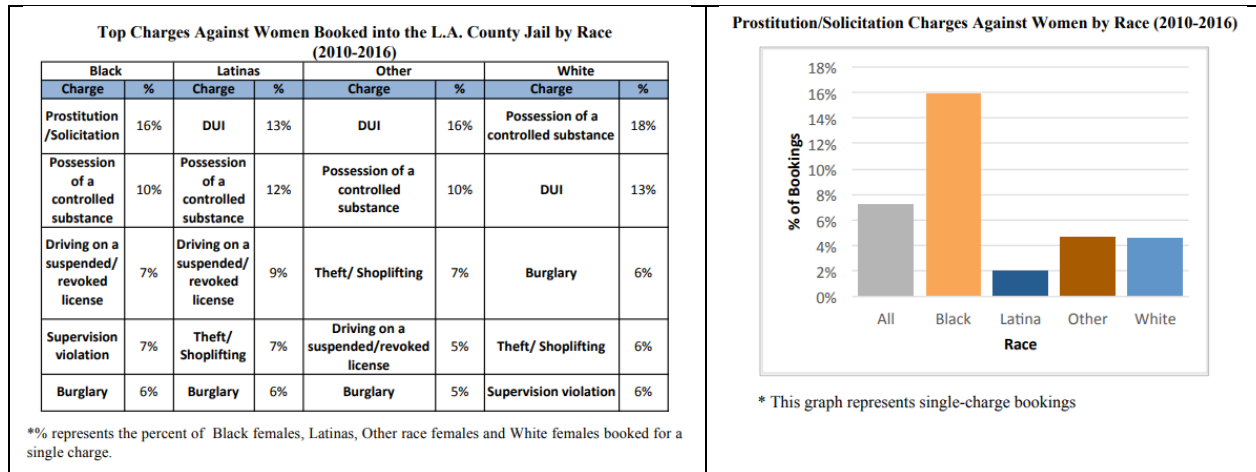
Women in L.A. (and nationally) are often booked for low-level charges related to substance use, poverty and survival.

5 MOST COMMON CHARGES FOR WOMEN IN L.A. COUNTY JAIL (2010-2016)		
	Charge Category	% of Charges
#1	Possession of a controlled substance	14%
#2	Driving on a suspended license / no insurance	8%
#3	Theft / shoplifting / larceny	7%
#4	Failure to appear	6%
#5	DUI	6%

MEDIAN TIME INCARCERATED FOR WOMEN ON COMMON CHARGES (2010-2016)	
Driving on a suspended license	2 days
Prostitution	4 days
Drug possession	6 days
Supervision violation	13 days

### SPOTLIGHT ON PROSTITUTION & RACIAL DISPARITIES:

Prostitution remains a **common charge** that leads to the booking of women into L.A. County Jail. There is, however, a **large racial disparity**. Black women are disproportionately impacted, as it is the most common booking charge they face.



### SPOTLIGHT ON SUBSTANCE USE & RACIAL DISPARITIES:

Between 2010 and 2016, there were 95,013 bookings solely for charges related to an illicit substance.	
<b>Opioid</b> only charge	31,794
<b>Methamphetamine</b> only charge	39,446

Black residents, including women, were most impacted by OPIOID arrests.

- Black residents were 1 out of every 2 opioid jail bookings.
- Among women, over 56 percent of opioid related jail bookings was a Black woman.

**Latinx residents, including women, were most impacted by METHAMPHETAMINE arrests.**

- Nearly 60 percent of all methamphetamine bookings involved a Latinx person.
- Latina bookings accounted for 54 percent of all women booked on a methamphetamine charge.

---

**Sources:** The information and graphics detailed in this document are largely from Million Dollar Hoods data analysis conducted in 2018 and 2019 as well as from Vera Institute's *Overlooked* report. Please see the following publicly available resources for more information:

- Danielle Dupuy, Sofia Espinoza, Joanna Itzel Navarro, Kelly Lytle-Hernandez. *Women in the Los Angeles County Jail System: An Analysis of LASD Data*. Los Angeles: The Million Dollar Hoods Project, 2018.
- Danielle Dupuy, Eric Lee, Mariah Tso, Isaac Bryan, Kelly Lytle Hernandez. *Bookings into the L.A. County Jail, 2010-2016*. Los Angeles: The Million Dollar Hoods Project, 2019.
- Elizabeth Swavola, Kristine Riley, Ram Subramanian. *Overlooked: Women and Jails in an Era of Reform*. New York: Vera Institute of Justice, 2016.
- L.A. County Report Back on Developing a Care-First Treatment Model, February 2019, at <http://file.lacounty.gov/SDSInter/bos/supdocs/139802.pdf>
- Vera Institute of Justice and The New York Women's Foundation. *A New Path to Justice: Getting Women Off Rikers Island*. New York: Vera Institute of Justice, 2018.