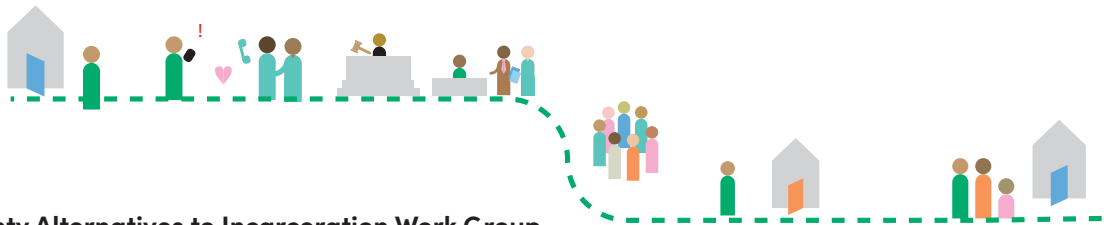


Care First, Jails Last



Final Report of the LA County Alternatives to Incarceration Work Group

Health and Racial Justice Strategies for Safer Communities

On February 12, 2019, the Los Angeles County Board of Supervisors passed a motion which created the Alternatives to Incarceration Work Group bringing together community advocates, service providers, community members and staff from multiple County departments to provide the Board a *Road Map*, with an action-oriented framework and implementation plan, to scale alternatives to incarceration and diversion so care and services are provided first, and jail is a last resort.

The ATI Work Group reached consensus on three values to guide the process: (1) equity and racial justice, (2) inclusion of many voices, and (3) human-first language. Through an intensive consensus-building process the ATI Work Group developed and approved 114 recommendations involving more than 1,000 government and community stakeholders over ten months.

ATI Timeline

Phase One: Development of Work Group Structure, Mission, Guiding Values and Interim Report, March – June 2019

- over 270 participants
- 26 government departments
- 28 advocacy organizations
- 21 community-based service providers
- April 26, 2019** Racial Equity Retreat
- June 11, 2019** ATI interim report, delivered to the Board

Phase Two: Expanded Scope, Community Engagement, Implementation Planning, and Final Report, July 2019 – March 2020

- 1,300 participants
- 47 government departments
- 106 community organizations & institutions
- September 20, 2019**, ATI retreat to address the voices of survivors and victims of harm
- March 2020:** final report

Reimagining the LA County Criminal Justice System

Of the County's ten million residents, 74 percent of people arrested are Black and Latinx. Los Angeles County operates the largest jail system in the United States, which imprisons more people than any other nation on Earth. The profile of incarceration in Los Angeles is consistent with national research showing that a disproportionate number of people admitted to jails are sick, poor, homeless, and struggling with mental health and substance use disorders. In other words, our jails are largely filled with sick, marginalized, and vulnerable populations.

Racial Disparities

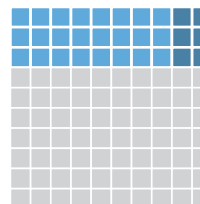
There are significant racial disparities in who is incarcerated in the LA County jail, with Black people being booked at staggering disproportionate rates.



Mental Health and Substance Use Needs

A significant portion of people in the LA County jail have identified mental health and substance use needs.

Nearly 17,000 people are in custody in the LA County jail. 30% of them are in jail mental health housing.

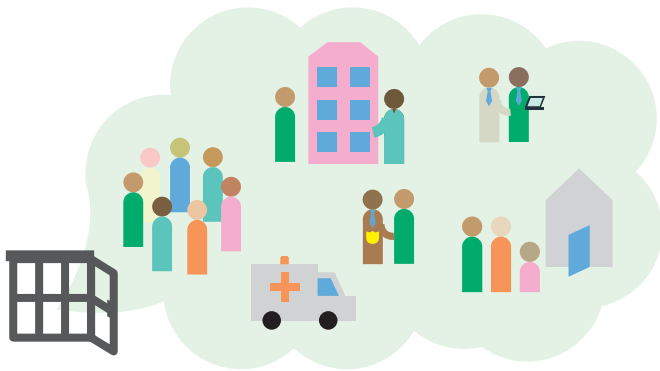


21% of people in jail mental health housing have a substance use disorder

According to RAND, 61% of the mental health population could be appropriate for community release.

Care First, Jails Last

Alternatives to Incarceration



The ATI recommendations describe how LA County can transform its criminal justice system from arresting and locking up people experiencing behavioral health crises—compounded by homelessness, poverty and trauma—to assisting people in accessing neighborhood-based treatment, housing, employment, family reunification, community health workers and other strengths-based supports. From operating the world’s largest jail and de facto mental health facility to building a decentralized, restorative and robust community-based system of care and safer, healthier communities. From a jail that disproportionately incarcerates people and communities of color to a system of justice that works to repair harm and equitably distribute resources where they are needed most.

If we can successfully implement the recommendations of the ATI Work Group, some immediately and others over time, we can redefine the roles of our healthcare and criminal justice systems.

With this vision, LA County will provide care and services first, and jail as a last resort.

To ensure the Roadmap was actionable and to kickstart implementation, the 114 recommendations were organized into five overarching strategies and 26 foundational recommendations.



Strategy 1 – Expand and scale **community-based, holistic care** and services through sustainable and equitable **community capacity building** and service coordination.



Strategy 2 – Utilize **behavioral health responses** for individuals experiencing mental health and/or substance use disorders, homelessness, and other situations caused by unmet needs; **avoid and minimize law enforcement responses**.



Strategy 3 – Support and deliver meaningful **pre-trial release and diversion services**.



Strategy 4 – Provide effective **treatment services** in alternative placements, instead of **jail time**.



Strategy 5 – Effectively **coordinate the implementation** of ATI recommendations, ensuring that strategies work to **eliminate racial disparities** and to authentically **engage and compensate system-impacted individuals**.